



Cytoskeleton,INC
The Protein Experts

EUROMEDEX

The Experts in Health

LIFE SCIENCES PRODUCTS

15%

OFF

15% off Select Small G-Protein Tools



Cytoskeleton,INC
The Protein Experts

Cdc42

Rho

Rac

Ras

Ral

Arf



Cytoskeleton Inc's - Activation Assays

Ras - Rho - Rac - Cdc42 - Arf - Ral

Learn More



Valid until June 30th, 2026



EUROMEDEX 24 rue des Tuileries · 67460 SOUFFELWEYERSHEIM

Tél 03 88 18 07 22 ✉ research@euromedex.com 🌐 <https://shopresearch.euromedex.com>

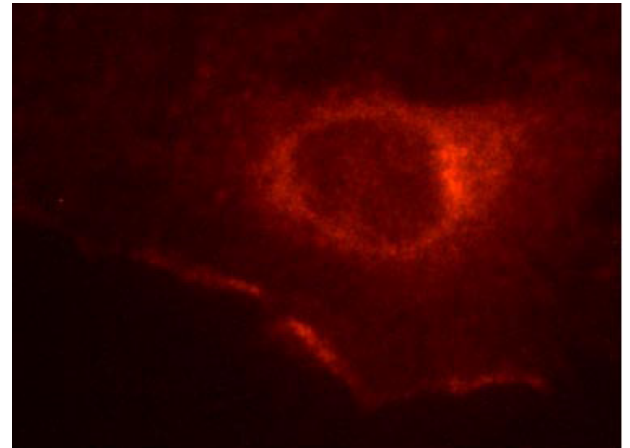
Cytoskeleton's Product Summary Highlights

Anti-Rac1: Mouse Mab (Cat. CS-ARC03)

Rac1 is one of most extensively studied member of Rho GTPase family. This family is involved in a wide range of cellular responses, including cytoskeletal reorganization, regulation of transcription, cell migration, cellular transformation and metastasis. Rac1 is expressed in a large number of different cell types.

Learn more at:

<https://www.cytoskeleton.com/product/anti-rac1-mouse-mab>



RhoA G-LISA (Cat. CS-BK124)

The G-LISA RhoA activation assays simplifies detection of active RhoA; results are attainable within 3 hours.

This unique, and highly cited kit is only available from Cytoskeleton Inc.

Learn more at:

<https://www.cytoskeleton.com/product/rhoa-g-lisa-gtpase-activation-assay-kit-colorimetric-format>



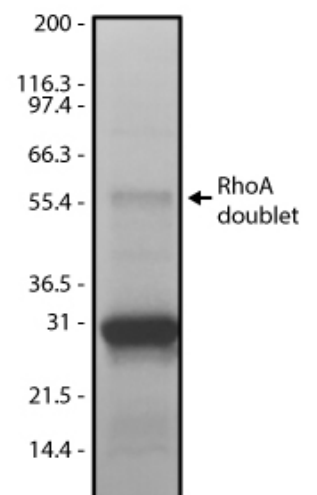
Essential Kit Components:

- Rho-GTP affinity wells (12 strips of 8 wells)
- Anti-RhoA antibody
- HRP-labeled secondary antibody
- Positive control RhoA protein
- Protease inhibitor cocktail (Cat. # PIC02)
- Absorbance detection reagents
- Precision Red™ Advanced protein assay reagent (Cat. CS-ADV02)
- Manual with detailed protocols and extensive troubleshooting guide

RhoA Protein: Human Wild Type (Cat. CS-RH01)

The human RhoA protein has been produced in a bacterial expression system and is perfect for the study of RhoA biochemistry, RhoA GTPase assays, RhoA nucleotide exchange assays, and in RhoA binding studies.

Learn more at: <https://www.cytoskeleton.com/product/rhoa-protein-his-tagged-human-wild-type>



*Terms and Conditions: Can not be combined with other offers.

Offer Expires: June 30th, 2026



Cat# Number	PRODUCT	Size	List price 2026 €HT	Offer price €HT
CS-ACD04-L	Anti-Cdc42 - Mouse Mab	1 x 500 µl	590,00€	501,50 €
CS-ACD04-S	Anti-Cdc42 - Mouse Mab	1 x 125 µl	160,00€	136,00 €
CS-ARC03-L	Anti-Rac1 - mouse Mab	2 x 100 µl	577,00€	490,45 €
CS-ARC03-S	Anti-Rac1 - mouse Mab	1 x 25 µl	160,00€	136,00 €
CS-BK032-S	Arf1 Pull-down Activation Assay Biochem Kit (bead pull-down format) - 20 Assays	KIT 20 assays	737,00€	626,45 €
CS-BK033-S	Arf6 Pull-down Activation Assay Biochem Kit (bead pull-down format) - 20 Assays	KIT 20 assays	737,00€	626,45 €
CS-CS-GE07	ARNO GEF Protein (Sec7 Exchange Domain - aa31-267 - 6xHis tag)	1 x 100 µg	605,00€	514,25 €
CS-BK127-L	Cdc42 G-LISA GTPase Activation Assay (Colorimetric format)	KIT 96 assays	1 377,00€	1 170,45 €
CS-BK127-S	Cdc42 G-LISA GTPase Activation Assay (Colorimetric format)	KIT 24 assays	868,00€	737,80 €
CS-C17G01-A	Cdc42 protein - GST tagged - human dominant negative	1 x 25 µg	633,00€	538,05 €
CS-CDG01-XL	Cdc42 protein - GST tagged - human wild type	1 x 1 mg	1 738,00€	1 477,30 €
CS-C6101-A	Cdc42 protein - His tagged - human constitutively active	1 x 10 µg	633,00€	538,05 €
CS-CD01-A	Cdc42 protein - His tagged - human wild type	1 x 100 µg	633,00€	538,05 €
CS-CD01-C	Cdc42 protein - His tagged - human wild type	3 x 100 µg	1 133,00€	963,05 €
CS-CD01-XL	Cdc42 protein - His tagged - human wild type	1 x 1 mg	2 238,00€	1 902,30 €
CS-BK034-L	Cdc42 Pull-down Activation Assay Biochem Kit (bead pull-down format)	KIT 50 assays	1 238,00€	1 052,30 €
CS-BK034-S	Cdc42 Pull-down Activation Assay Biochem Kit (bead pull-down format)	KIT 20 assays	570,00€	484,50 €
CS-GE01-A	Dbp protein GEF domain - His tagged - human recombinant	2 x 50 µg	451,00€	383,35 €
CS-CT03-A	Exoenzyme C3 transferase protein - His tagged -Clostridium botulinum recombinant	1 x 25 µg	312,00€	265,20 €
CS-CT03-C	Exoenzyme C3 transferase protein - His tagged -Clostridium botulinum recombinant	4 x 25 µg	1 146,00€	974,10 €
CS-GDI01-A	GDP dissociation inhibitor protein - GST tagged - Homo sapiens recombinant	1 x 25 µg	451,00€	383,35 €
CS-GGA07-A	GGA3-PBD Beads (Binds active Arf1 and Arf6 proteins)	1 x 500 µg	883,00€	750,55 €
CS-RS01-A	H-Ras protein - His tagged - human wild type	1 x 100 µg	633,00€	538,05 €
CS-RS01-C	H-Ras protein - His tagged - human wild type	3 x 100 µg	1 146,00€	974,10 €
CS-CS-RS14	K-Ras4B G12C mutated protein (Human recombinant - 6xHis-tag)	1 x 100 µg	639,00€	543,15 €
CS-CS-RS13	K-Ras4B Protein - G12D (Human recombinant - 6xHis-tag)	1 x 100 µg	639,00€	543,15 €
CS-CS-RS04	K-Ras4B Protein - G12V (Human recombinant)	1 x 100 µg	639,00€	543,15 €
CS-CS-RS06	K-Ras4B Protein - G13D (Human recombinant - 6xHis-tag)	1 x 100 µg	639,00€	543,15 €
CS-CS-RS07	K-Ras4B Protein - G13S (Human recombinant - 6xHis-tag)	1 x 100 µg	639,00€	543,15 €
CS-CS-RS08	K-Ras4B Protein - K128A (Human recombinant - 6xHis-tag)	1 x 100 µg	639,00€	543,15 €
CS-CS-RS03	K-Ras4B Protein - wild-type	1 x 100 µg	639,00€	543,15 €
CS-CS-RS02	N-Ras Protein - wild-type (Human recombinant)	1 x 100 µg	639,00€	543,15 €
CS-PAK02-A	PAK-PBD beads (binds active Rac/Cdc42 proteins)	2 x 500 µg	682,00€	579,70 €
CS-PAK02-B	PAK-PBD beads (binds active Rac/Cdc42 proteins)	6 x 500 µg	1 974,00€	1 677,90 €
CS-PAK01-A	PAK-PBD protein - GST-tagged	1 x 250 µg	612,00€	520,20 €
CS-PAK01-B	PAK-PBD protein - GST-tagged	4 x 250 µg	1 627,00€	1 382,95 €
CS-CN02-A	Rac/Cdc42 Activator II	5 x 10 units	327,00€	277,95 €
CS-CN02-B	Rac/Cdc42 Activator II	20 x 10 units	1 167,00€	991,95 €
CS-BK125	Rac1 -2 -3 G-LISA GTPase Activation Assay (Colorimetric format) 96 assays	KIT 96 assays	1 377,00€	1 170,45 €
CS-BK126	Rac1 G-LISA GTPase Activation Assay (Luminescence format) - 96 assays	KIT 96 assays	1 377,00€	1 170,45 €

Cat# Number	PRODUCT	Size	List price 2026 €HT	Offer price €HT
CS-BK128-L	Rac1 G-LISA GTPase Activation Assay Kit (Colorimetric Based)	KIT 96 assays	1 377,00 €	1 170,45 €
CS-BK128-S	Rac1 G-LISA GTPase Activation Assay Kit (Colorimetric Based)	KIT 24 assays	868,00 €	737,80 €
CS-R17G01-A	Rac1 protein - GST tagged - human dominant negative	1 x 25 µg	633,00 €	538,05 €
CS-RCG01-C	Rac1 protein - GST tagged - human wild type	8 x 25 µg	1 001,00 €	850,85 €
CS-R6101-A	Rac1 protein - His tagged - human constitutively active	1 x 10 µg	633,00 €	538,05 €
CS-RC01-A	Rac1 protein - His tagged - human wild type	1 x 100 µg	633,00 €	538,05 €
CS-RC01-C	Rac1 protein - His tagged - human wild type	3 x 100 µg	1 146,00 €	974,10 €
CS-RC01-XL	Rac1 protein - His tagged - human wild type	1 x 1 mg	2 258,00 €	1 919,30 €
CS-BK035-L	Rac1 Pull-down Activation Assay Biochem Kit (bead pull-down format)	KIT 50 assays	1 238,00 €	1 052,30 €
CS-BK035-S	Rac1 Pull-down Activation Assay Biochem Kit (bead pull-down format)	KIT 20 assays	570,00 €	484,50 €
CS-RC02-A	Rac2 protein - His tagged - human wild type	1 x 100 µg	633,00 €	538,05 €
CS-RF02-A	Raf-RBD beads (binds active Ras protein)	2 x 2 mg	751,00 €	638,35 €
CS-RF02-B	Raf-RBD beads (binds active Ras protein)	6 x 2 mg	2 155,00 €	1 831,75 €
CS-BK129	RalA G-LISA GTPase Activation Assay Kit (Colorimetric Based) 96 assays	KIT 96 assays	1 377,00 €	1 170,45 €
CS-RR02-A	Rap1b protein - His tagged - human wild type	1 x 100 µg	633,00 €	538,05 €
CS-CS-GE09	RAPGEF5 Protein - Ras association and exchange domain (57– 580) wild type- (Human recombinant - GST tagged)	1 x 100 µg	605,00 €	514,25 €
CS-BK101	Ras GEF exchange assay (BK101)	KIT 80-300 assays	1 043,00 €	886,55 €
CS-BK131	Ras G-LISA GTPase Activation Assay Kit (Colorimetric Based) - 96 assays	KIT 96 assays	1 377,00 €	1 170,45 €
CS-BK008-L	Ras Pull-down Activation Assay Biochem Kit (bead pull-down format)	KIT 50 assays	1 238,00 €	1 052,30 €
CS-BK008-S	Ras Pull-down Activation Assay Biochem Kit (bead pull-down format)	KIT 20 assays	570,00 €	484,50 €
CS-CS-GE03	RasGRF1 GEF Protein (Cdc25 Exchange Domain - aa1038-1270 - MBP tag)	1 x 100 µg	605,00 €	514,25 €
CS-CN01-A	Rho Activator I	5 x 10 units	327,00 €	277,95 €
CS-CN01-B	Rho Activator I	20 x 10 units	1 167,00 €	991,95 €
CS-CN03-A	Rho activator II	3 x 20 µg	327,00 €	277,95 €
CS-CN03-B	Rho activator II	9 x 20 µg	917,00 €	779,45 €
CS-GAS01-A	Rho GAP protein (catalytic domain) - GST tagged - Homo sapiens recombinant	1 x 50 µg	451,00 €	383,35 €
CS-GAS01-B	Rho GAP protein (catalytic domain) - GST tagged - Homo sapiens recombinant	4 x 50 µg	1 182,00 €	1 004,70 €
CS-GAP01-A	Rho GAP protein -GST tagged - Homo sapiens recombinant	1 x 50 µg	451,00 €	383,35 €
CS-GAP01-B	Rho GAP protein -GST tagged - Homo sapiens recombinant	4 x 50 µg	1 182,00 €	1 004,70 €
CS-CT04-A	Rho Inhibitor I	1 x 20 µg	312,00 €	265,20 €
CS-CT04-B	Rho Inhibitor I	5 x 20 µg	1 028,00 €	873,80 €
CS-CT04-C	Rho Inhibitor I	20 x 20 µg	2 536,00 €	2 155,60 €
CS-CN04-A	Rho/Rac/Cdc42 Activator I	3 x 20 µg	327,00 €	277,95 €
CS-CN04-B	Rho/Rac/Cdc42 Activator I	9 x 20 µg	917,00 €	779,45 €
CS-BK030	RhoA / Rac1 / Cdc42 Activation Assay Combo Biochem Kit (bead pull-down format) - 3 x 10 assays	KIT 3 x 10 assays	1 501,00 €	1 275,85 €
CS-BK135	RhoA / Rac1 / Cdc42 G-LISA GTPase Activation Assay Bundle 3 Kits (24 assays per kit)	3 KITS (24 assays/kit)	2 474,00 €	2 102,90 €
CS-BK121	RhoA G-LISA GTPase Activation Assay (Luminescence format) 96 assays	KIT 96 assays	1 377,00 €	1 170,45 €
CS-BK124-L	RhoA G-LISA GTPase Activation Assay Kit (Colorimetric format)	KIT 96 assays	1 377,00 €	1 170,45 €
CS-BK124-S	RhoA G-LISA GTPase Activation Assay Kit (Colorimetric format)	KIT 24 assays	868,00 €	737,80 €
CS-RHG01-C	RhoA protein - GST tagged - human wild type	8 x 25 µg	932,00 €	792,20 €
CS-R6301-A	RhoA protein - His tagged - human constitutively active	1 x 10 µg	633,00 €	538,05 €
CS-RH01-A	RhoA protein - His tagged - human wild type	1 x 100 µg	633,00 €	538,05 €

Cat# Number	PRODUCT	Size	List price 2026 €HT	Offer price €HT
CS-RH01-C	RhoA protein - His tagged - human wild type	3 x 100 µg	1 146,00 €	974,10 €
CS-RH01-XL	RhoA protein - His tagged - human wild type	1 x 1 mg	2 258,00 €	1 919,30 €
CS-BK036-L	RhoA Pull-down Activation Assay Biochem Kit (bead pull-down format)	KIT 80 assays	1 238,00 €	1 052,30 €
CS-BK036-S	RhoA Pull-down Activation Assay Biochem Kit (bead pull-down format)	KIT 20 assays	570,00 €	484,50 €
CS-RH03-A	RhoC protein - His tagged - human wild type	1 x 100 µg	633,00 €	538,05 €
CS-BK105	RhoGAP assay (BK105)	KIT 80-160 assays	1 043,00 €	886,55 €
CS-BK100	RhoGEF exchange assay (BK100)	KIT 60-300 assays	1 043,00 €	886,55 €
CS-RT02-A	Rhotekin-RBD beads (binds active Rho proteins)	2 x 2 mg	1 001,00 €	850,85 €
CS-RT02-B	Rhotekin-RBD beads (binds active Rho proteins)	6 x 2 mg	2 224,00 €	1 890,40 €
CS-RT01-A	Rhotekin-RBD protein (binds active Rho proteins)	1 x 500 µg	709,00 €	602,65 €
CS-CS-RS05	R-Ras Protein - wild-type	1 x 100 µg	639,00 €	543,15 €
CS-CS-GE10	SOS1 Exchange Domain (564-1049) Protein - GST-Tagged (Human Recombinant)	1 x 100 µg	605,00 €	514,25 €
CS-GE02-A	SOS1 Protein (ExD Exchange Domain - aa564-1049 - 6xHis tag)	1 x 100 µg	605,00 €	514,25 €
CS-GE02-XL	SOS1 Protein (ExD Exchange Domain - aa564-1049 - 6xHis tag)	1 x 1 mg	2 668,00 €	2 267,80 €
CS-CS-GE08	SOS2 exchange domain (563-1051) protein (Human recombinant)	1 x 100 µg	605,00 €	514,25 €
CS-CS-GE04	Tiam1 GEF Protein (DHPH Exchange Domain - aa1040-1406 - MBP tag)	1 x 100 µg	605,00 €	514,25 €
CS-BK150	Total RhoA ELISA	KIT 96 assays	778,00 €	661,30 €
CS-CS-GE05	Vav1 GEF Protein (DHPHC1 Exchange Domain - Y174D mutant - aa168-522 - 6xHis tag)	1 x 100 µg	605,00 €	514,25 €
CS-CS-GE06	Vav2 GEF Protein (DH Exchange Domain - aa189-374 - 6xHis tag)	1 x 100 µg	605,00 €	514,25 €
CS-VCG03-A	WASP protein VCA domain - GST tagged - human	1 x 500 µg	765,00 €	650,25 €