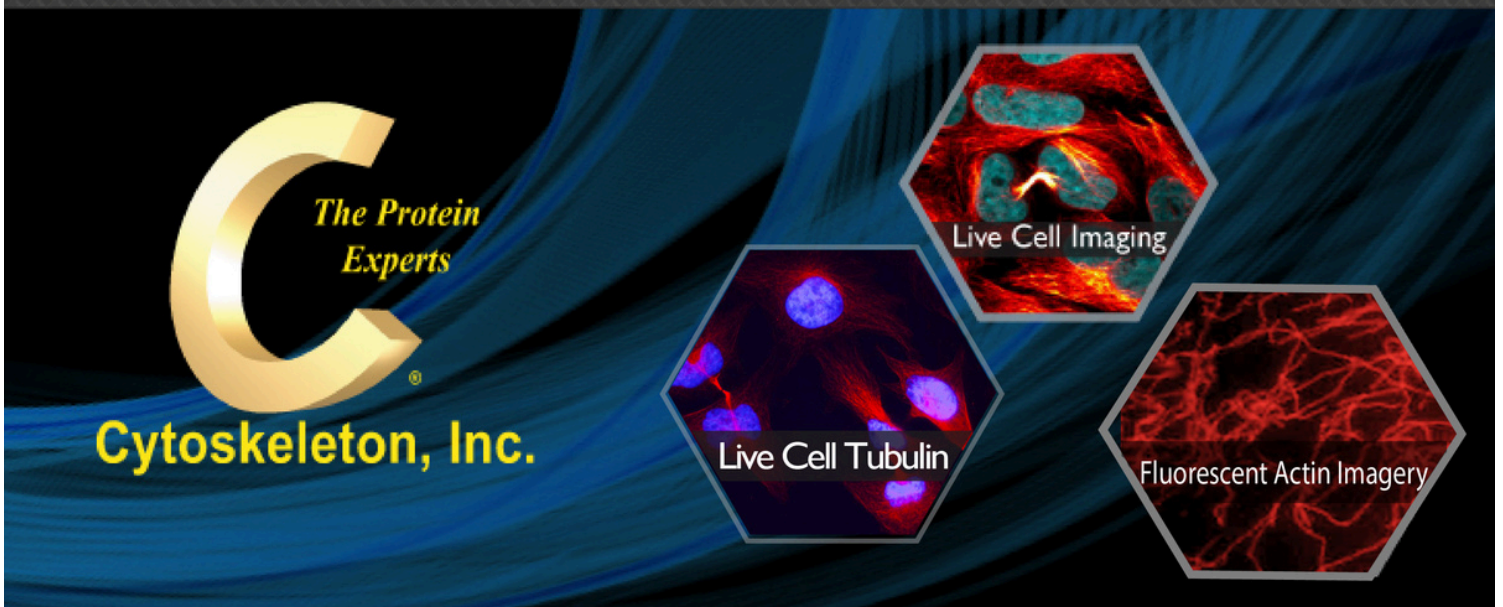


# 20% OFF on all Cytoskeleton's Live Imaging products

## Cytoskeleton's Live Cell Imaging Sale!



**Valid until April 30<sup>TH</sup>, 2025**

**Fluorescent Actin**

**Fluorescent Tubulin**

**Small G-protein Activators and Inhibitors**

**Fluorescent ECM**

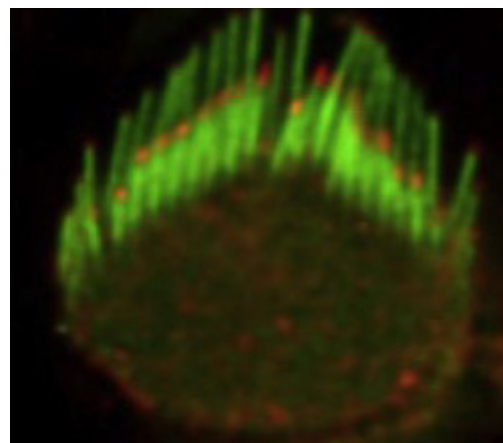
**Memglow Plasma Membrane Probes for Bioimaging**

## Cytoskeleton's Product Summary Highlights

### Fluorescent Actin Proteins (Cat # APCR, AR05, AR06, AR07)

Cytoskeleton Inc. offers several fluorescently-labeled purified actin proteins including the new HiLyte™488 actin and HiLyte™555 actins. The expanded offering will provide more versatility for researchers while complementing our existing labeled actin tools that are used in an array of applications including labeling F-actin barbed ends with rhodamine actin.

Learn more at: <https://www.cytoskeleton.com/live-cell-reagents/fluorescent-actin-protein>

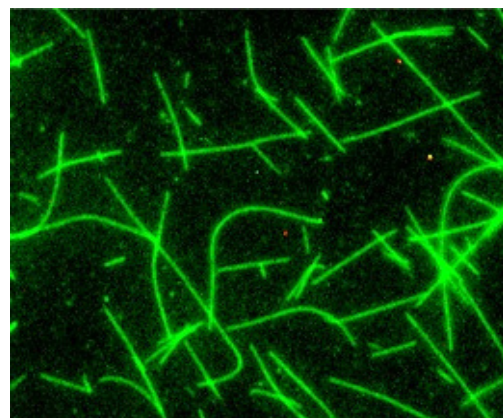


### Fluorescent Tubulin Products (Cat # TL440M, TL488M, TL590M, TL620M, TL670M)

Since 1993 Cytoskeleton has provided purified tubulin proteins to the scientific community. We continually strive to provide the purest, most biological active and relevant tubulin proteins, kits and reagents for today's researchers. The fluorescent tubulin proteins in the link below are useful for monitoring microtubule dynamics in living cells.

- Highly Pure
- Biologically Active
- Highly Validated and Published

Learn more at: <https://www.cytoskeleton.com/live-cell-reagents/fluorescent-tubulin-proteins>



REF	PRODUCT	AMOUNT	PRICE 2025 €HT	Offer Price €HT
CS-AR06-A	Actin protein (HiLyte488, rabbit skeletal muscle)	5 x 20 µg	241,00	192,80
CS-AR06-B	Actin protein (HiLyte488, rabbit skeletal muscle)	10 x 20 µg	424,00	339,20
CS-AR06-C	Actin protein (HiLyte488, rabbit skeletal muscle)	20 x 20 µg	815,00	652,00
CS-AR07-A	Actin protein (HiLyte555, rabbit skeletal muscle)	5 x 20 µg	241,00	192,80
CS-AR07-B	Actin protein (HiLyte555, rabbit skeletal muscle)	10 x 20 µg	424,00	339,20
CS-AR07-C	Actin protein (HiLyte555, rabbit skeletal muscle)	20 x 20 µg	815,00	652,00
CS-APHR-A	Actin protein (rhodamine human platelet non-muscle)	4 x 10 µg	437,00	349,60
CS-APHR-C	Actin protein (rhodamine human platelet non-muscle)	20 x 10 µg	1382,00	1105,60
CS-AR05-A	Actin protein (rhodamine, rabbit skeletal muscle)	5 x 20 µg	241,00	192,80
CS-AR05-B	Actin protein (rhodamine, rabbit skeletal muscle)	10 x 20 µg	424,00	339,20
CS-AR05-C	Actin protein (rhodamine, rabbit skeletal muscle)	20 x 20 µg	815,00	652,00
CS-CT04-A	Cell Permeable Rho Inhibitor (C3 Trans based))	1 x 20 µg	293,00	234,40
CS-CT04-B	Cell Permeable Rho Inhibitor (C3 Trans based))	5 x 20 µg	965,00	772,00
CS-CT04-C	Cell Permeable Rho Inhibitor (C3 Trans based))	20 x 20 µg	2380,00	1904,00
CS-FNR03-A	Fibronectin Biotin (bovine plasma)	5 x 20 µg	535,00	428,00
CS-FNR03-B	Fibronectin Biotin (bovine plasma)	20 x 20 µg	1630,00	1304,00
CS-FNR04-A	Fibronectin Far-red HiLyte647™ (bovine plasma)	5 x 20 µg	535,00	428,00
CS-FNR04-B	Fibronectin Far-red HiLyte647™ (bovine plasma)	20 x 20 µg	1630,00	1304,00
CS-FNR02-A	Fibronectin HiLyte488™ (bovine plasma)	5 x 20 µg	535,00	428,00
CS-FNR02-B	Fibronectin HiLyte488™ (bovine plasma)	20 x 20 µg	1630,00	1304,00
CS-FNR05-A	Fibronectin Red/orange HiLyte555™ (bovine plasma)	5 x 20 µg	535,00	428,00
CS-FNR05-B	Fibronectin Red/orange HiLyte555™ (bovine plasma)	20 x 20 µg	1630,00	1304,00
CS-FNR01-A	Fibronectin Rhodamine (bovine plasma)	5 x 20 µg	535,00	428,00
CS-FNR01-B	Fibronectin Rhodamine (bovine plasma)	20 x 20 µg	1630,00	1304,00
CS-LMN03-A	Laminin Biotin (mouse tumor)	5 x 20 µg	587,00	469,60
CS-LMN03-B	Laminin Biotin (mouse tumor)	20 x 20 µg	1565,00	1252,00
CS-LMN02-A	Laminin HiLyte488™ (mouse tumor)	5 x 20 µg	587,00	469,60
CS-LMN02-B	Laminin HiLyte488™ (mouse tumor)	20 x 20 µg	1565,00	1252,00
CS-LMN01-A	Laminin Rhodamine (mouse tumor)	5 x 20 µg	587,00	469,60
CS-LMN01-B	Laminin Rhodamine (mouse tumor)	20 x 20 µg	1565,00	1252,00
CS-MG11	LipBright™ 530 SMCy3.5: Fluorogenic Lipid Droplet Probe ex 530 em 558 70 nmoles (MEMBRIGHT Family Probe)	70 nmoles	516,00	412,80
CS-MG12	LipBright™ 650 SMCy5.5: Fluorogenic Lipid Droplet Probe ex 650 em 670 70 nmoles (MEMBRIGHT Family Probe)	70 nmoles	516,00	412,80
CS-MG13	LipBright™ 700 SMCy7.0: Fluorogenic Lipid Droplet Probe ex 700 em 770 70 nmoles (MEMBRIGHT Family Probe)	70 nmoles	516,00	412,80
CS-MG09-16	MemGlow 400™ Pro12A Blue Plasma-membrane Probe and Lipid Order/Disorder Probe	20-40 slides	336,00	268,80
CS-MG09-80	MemGlow 400™ Pro12A Blue Plasma-membrane Probe and Lipid Order/Disorder Probe	100-200 slides	634,00	507,20

REF	PRODUCT	AMOUNT	PRICE 2025 €HT	Offer Price €HT
CS-MG01-10	MemGlow 488 - Fluorogenic Plasma Membrane probe ex 499 em 507 250-1500 slides (MEMBRIGHT Family Probe)	250-1500 slides	634,00	507,20
CS-MG01-02	MemGlow 488 - Fluorogenic Plasma Membrane probe ex 499 em 507 50-300 slides (MEMBRIGHT Family Probe)	50-300 slides	336,00	268,80
CS-MG02-10	MemGlow 560 - Fluorogenic Plasma Membrane probe ex 555 em 570 250-1500 slides (MEMBRIGHT Family Probe)	250-1500 slides	634,00	507,20
CS-MG02-02	MemGlow 560 - Fluorogenic Plasma Membrane probe ex 555 em 570 50-300 slides (MEMBRIGHT Family Probe)	50-300 slides	336,00	268,80
CS-MG03-10	MemGlow 590 - Fluorogenic Plasma Membrane probe ex 580 em 620 250-1500 slides (MEMBRIGHT Family Probe)	250-1500 slides	634,00	507,20
CS-MG03-02	MemGlow 590 - Fluorogenic Plasma Membrane probe ex 580 em 620 50-300 slides (MEMBRIGHT Family Probe)	50-300 slides	336,00	268,80
CS-MG04-10	MemGlow 640 - Fluorogenic Plasma Membrane probe ex 650 em 673 250-1500 slides (MEMBRIGHT Family Probe)	250-1500 slides	634,00	507,20
CS-MG04-02	MemGlow 640 - Fluorogenic Plasma Membrane probe ex 650 em 673 50-300 slides (MEMBRIGHT Family Probe)	50-300 slides	336,00	268,80
CS-MG05-10	MemGlow 700 - Fluorogenic Plasma Membrane probe ex 650 em 720 250-1500 slides (MEMBRIGHT Family Probe)	250-1500 slides	634,00	507,20
CS-MG05-02	MemGlow 700 - Fluorogenic Plasma Membrane probe ex 650 em 720 50-300 slides (MEMBRIGHT Family Probe)	50-300 slides	336,00	268,80
CS-MG08	MemGlow™ NR12 S Membrane Polarity Probe ex 550 em 633 100-600 slides (MEMBRIGHT Family Probe)	100-600 slides	634,00	507,20
CS-MG07	MemGlow™ NR12A Membrane Polarity Probe ex 555 em 637 100-600 slides (MEMBRIGHT Family Probe)	100-600 slides	634,00	507,20
CS-MG06	MemGlow™ NR4A Membrane Polarity Probe ex 553 em 637 50-300 slides (MEMBRIGHT Family Probe)	50-300 slides	634,00	507,20
CS-CN02-A	Rac and Cdc42 Activator	5 x 10 units	306,00	244,80
CS-CN02-B	Rac and Cdc42 Activator	20 x 10 units	1095,00	876,00
CS-CN01-A	Rho Activator	5 x 10 units	306,00	244,80
CS-CN01-B	Rho Activator	20 x 10 units	1095,00	876,00
CS-CN03-A	Rho activator II	3 x 20 µg	306,00	244,80
CS-CN03-B	Rho activator II	9 x 20 µg	861,00	688,80
CS-CN04-A	Rho/Rac/Cdc42 Activator I	3 x 20 µg	306,00	244,80
CS-CN04-B	Rho/Rac/Cdc42 Activator I	9 x 20 µg	861,00	688,80
CS-TL440M-A	Tubulin (AMCA dye labeled; porcine, micro-injectn)	5 x 20 µg	509,00	407,20
CS-TL440M-B	Tubulin (AMCA dye labeled; porcine, micro-injectn)	20 x 20 µg	1265,00	1012,00
CS-TL488M-A	Tubulin (HiLyte 488™ dye labeled; porcine, micro-injectn)	5 x 20 µg	509,00	407,20
CS-TL488M-B	Tubulin (HiLyte 488™ dye labeled; porcine, micro-injectn)	20 x 20 µg	1265,00	1012,00
CS-TL670M-A	Tubulin (HiLyte 647™ dye labeled; Porcine, micro-injectn)	5 x 20 µg	509,00	407,20
CS-TL670M-B	Tubulin (HiLyte 647™ dye labeled; Porcine, micro-injectn)	20 x 20 µg	1265,00	1012,00
CS-TL590M-A	Tubulin (Rhodamine labeled; porcine, micro-injectn)	5 x 20 µg	509,00	407,20
CS-TL590M-B	Tubulin (Rhodamine labeled; porcine, micro-injectn)	20 x 20 µg	1265,00	1012,00
CS-TL620M-A	Tubulin (X-rhodamine labeled; Porcine micr-injectn)	5 x 20 µg	509,00	407,20
CS-TL620M-B	Tubulin (X-rhodamine labeled; Porcine micr-injectn)	20 x 20 µg	1265,00	1012,00