

## Let Us Help Advance Your Tubulin Research

We continually strive to provide the purest, most biologically active tubulin proteins, kits and reagents for today's researchers. The product range includes tubulin from bacteria, pig, sheep, and human cancer cell origin, fluorescent and biotinylated conjugates, and user friendly kits.

**15% OFF** **Select Tubulin Products\***

**Valid until October 31st, 2024**

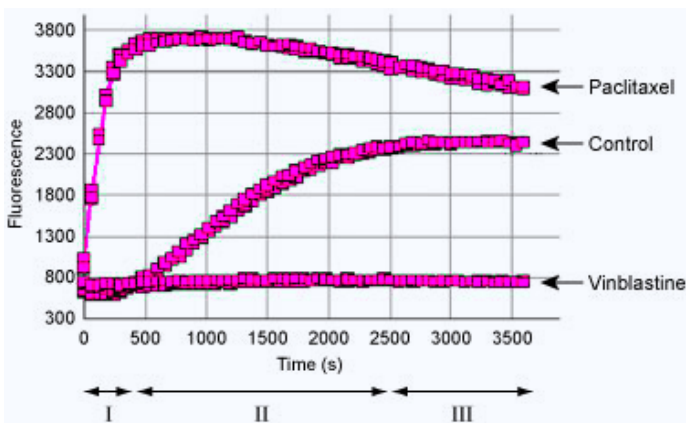
\* See terms and conditions at end of page

## Tubulin Polymerization Assay Kits

The most cited, the most trusted

The classic tubulin polymerization assay uses absorbance readings at 340 nm to follow microtubule formation. It is based upon the fact that light is scattered by microtubules to an extent that is proportional to the concentration of microtubule polymer. The fluorescence based assay is an economical one step procedure for determining the effects of drugs or proteins on tubulin polymerization. Polymerization is followed by fluorescence enhancement due to the incorporation of a fluorescent reporter into microtubules as polymerization occurs.

Tubulin Polymerization Assay



Legend: Results obtained from the fluorescence format tubulin polymerization assay (Cat. # CS-BK011P). Note the three phases of microtubule polymerization I = nucleation, II = polymerization, III = steady state. The effects of taxol (enhancer) and vinblastine (inhibitor) indicate a sensitive assay for drug screening and protein interaction studies.

### Fluorescence Based Tubulin

Polymerization Assay Using >99% Pure Tubulin (CS-BK011P)

**Product Uses:**

- Cost effective high throughput screen for anti-cancer compounds.
- Basic research to measure compound IC50s and specificity for tubulin.
- Screening proteins for effects on tubulin polymerization activity.
- Teaching aid for undergraduate/graduate class in pharmacology.



## Popular Tubulin Tools from Cytoskeleton

**Tubulin Tools From Cytoskeleton Inc.**

- > Simplified, Efficient Kits
- > Active, Pure Proteins
- > IF Imaging Tools
- > And More...

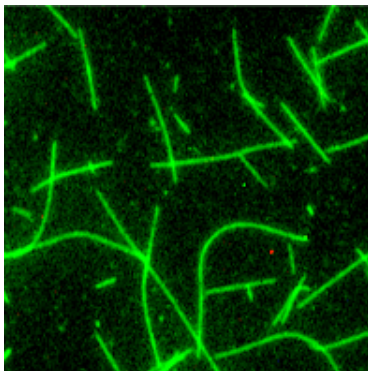


Tubulin IF Tools

Tubulin Proteins

Tubulin Kits

MAP Protein



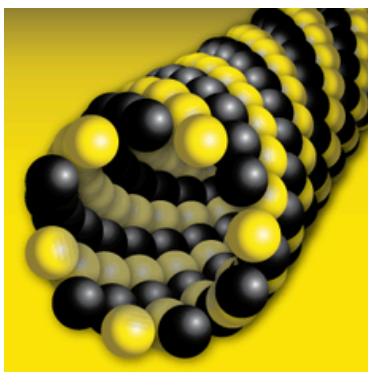
Porcine brain tubulin (>99% pure, see Cat. # [CS-T240](#)) has been fluorescently labeled.

Fluorescently labeled, purified tubulin is ideal for the following applications: Laser based applications, monitoring microtubule dynamics in living cells, speckle microscopy, and formation of fluorescent microtubules.

Available Products:

[CS-TL440M](#) [CS-TL488M](#) [CS-TL590M](#) [CS-TL620M](#) [CS-T670M](#)

### Scientists Trust Cytoskeleton's Microtubule Polymerization Assays



- Cytoskeleton is the leader in microtubule polymerization assays.
- Over 500 peer-reviewed article citations for tubulin.
- Since 2010, 86% of publications using microtubule polymerization assays cited Cytoskeleton as the source.



CAT. NO.	PRODUCT	Size	2024 List Price €HT	Offer Price €HT
CS-ATN02	Anti-tubulin polyAb pan specific (sheep)	2 x 100 µl	436,00	370,60
CS-ATN02-S	Anti-tubulin polyAb pan specific (sheep) (Trial size)	1 x 25 µl	171,00	145,35
CS-BK004P	Tubulin Polymerization Assay Kit (>97% pure porcine brain tubulin)	KIT 24 assays	879,00	747,15
CS-BK006P	Tubulin Polymerization Assay Kit (>99% pure porcine brain tubulin)	KIT 24 assays	1 251,00	1 063,35
CS-BK011P	Tubulin Polymerization Assay (fluoresc-96assays porcine brain tubulin)	KIT 96 assays	1 281,00	1 088,85
CS-BK029	Microtubule Binding Protein Spin Down Assay Kit	KIT 30-100 assays	1 056,00	897,60
CS-BK038	Microtubule / Tubulin In Vivo Assay Kit	KIT 30-100 assays	1 034,00	878,90
CS-CP01-A	CENP-E Motor domain (Hm.sap.)	2 x 25 µg	479,00	407,15
CS-CP01-XL	CENP-E Motor domain (Hm.sap.) (Bulk discount avail.)	1 x 1 mg	2 428,00	2 063,80
CS-EG01-A	Eg5 Motor Domain (Hm.sap.)	2 x 25 µg	552,00	469,20
CS-EG01-B	Eg5 Motor Domain (Hm.sap.)	10 x 25 µg	1 588,00	1 349,80
CS-EG01-XL	Eg5 Motor Domain (Hm.sap.) (Bulk discount avail.)	1 x 1 mg	2 599,00	2 209,15
CS-EG02-A	Eg5 Homolog Motor Domain (Asp.fum.)	2 x 15 µg	550,00	467,50
CS-FTZ02-A	FtsZ Protein (Staphylococcus aureus recombinant plus 6xHis tag)	1 x 1 mg	549,00	466,65
CS-FTZ02-B	FtsZ Protein (Staphylococcus aureus recombinant plus 6xHis tag)	5 x 1 mg	2 419,00	2 056,15
CS-FTZ03-A	FtsZ Protein (Streptococcus pneumoniae recombinant plus 6xHis tag)	1 x 1 mg	549,00	466,65
CS-FTZ03-B	FtsZ Protein (Streptococcus pneumoniae recombinant plus 6xHis tag)	5 x 1 mg	2 419,00	2 056,15
CS-FTZ04-A	FtsZ Protein (Enterococcus faecalis recombinant plus 6xHis tag)	1 x 1 mg	549,00	466,65
CS-FTZ04-B	FtsZ Protein (Enterococcus faecalis recombinant plus 6xHis tag)	5 x 1 mg	2 419,00	2 056,15
CS-FTZ05-A	FtsZ Protein (E.coli recombinant, 6xHis-tagged)	1 x 1 mg	549,00	466,65
CS-FTZ05-B	FtsZ Protein (E.coli recombinant, 6xHis-tagged)	5 x 1 mg	2 419,00	2 056,15
CS-HTS03-A	Tubulin (HTS format, porcine, 8 assays)	1 x 4 mg	519,00	441,15
CS-HTS03-B	Tubulin (HTS format, porcine, 96 assays)	1 x 40 mg	2 348,00	1 995,80
CS-KC01-A	KIF3 Motor Domain (Hm.sap.)	2 x 25 µg	550,00	467,50
CS-KF01-A	KIF3C Motor Domain (Hm.sap.)	2 x 25 µg	550,00	467,50
CS-KR01-A	KHC Motor Domain (Hm.sap.)	2 x 25 µg	550,00	467,50
CS-KR01-XL	KHC Motor Domain (Hm.sap.) (Bulk discounts avail.)	1 x 1 mg	2 428,00	2 063,80
CS-MAPF-A	MAP Fraction	1 x 100 µg	393,00	334,05
CS-MAPF-C	MAP Fraction	5 x 100 µg	1 251,00	1 063,35
CS-MK01-A	Hs MCAK Motor Domain	2 x 25 µg	515,00	437,75
CS-ML116-A	Tubulin MAP-rich (porcine brain)	1 x 1 mg	148,00	125,80
CS-ML116-B	Tubulin MAP-rich (porcine brain)	5 x 1 mg	707,00	600,95
CS-ML116-DX	Tubulin MAP-rich (porcine brain)	1 x 10 mg	1 233,00	1 048,05
CS-MP01-A	MKLP1 Motor Domain	2 x 25 µg	515,00	437,75
CS-MP01-XL	MKLP1 Motor Domain	1 x 1 mg	2 428,00	2 063,80
CS-MT002-A	Microtubules (Taxol Stabilized and Lyophilized)	4 x 500 µg	582,00	494,70
CS-MT002-XL	Microtubules (Taxol Stabilized and Lyophilized)	1 x 10 mg	1 841,00	1 564,85
CS-T238P-A	Tubulin (porcine brain, >99% pure)	1 x 1 mg	231,00	196,35
CS-T238P-B	Tubulin (porcine brain, >99% pure)	5 x 1 mg	872,00	741,20
CS-T238P-C	Tubulin (porcine brain, >99% pure)	20 x 1 mg	2 569,00	2 183,65
CS-T240-A	Tubulin (porcine brain, >99% pure)	1 x 1 mg	171,00	145,35
CS-T240-B	Tubulin (porcine brain, >99% pure)	5 x 1 mg	770,00	654,50
CS-T240-C	Tubulin (porcine brain, >99% pure)	20 x 1 mg	2 522,00	2 143,70
CS-T240-DX	Tubulin (porcine brain, >99% pure)	1 x 10 mg	1 206,00	1 025,10
CS-T333P-A	Tubulin (Biotin Conjugate; Porcine Brain)	5 x 20 µg	478,00	406,30
CS-T333P-B	Tubulin (Biotin Conjugate; Porcine Brain)	20 x 20 µg	1 214,00	1 031,90
CS-T333P-XL	Tubulin (Biotin Conjugate; Porcine Brain)	1 x 500 µg	1 159,00	985,15
CS-TA01-A	Tau (bovine brain)	1 x 50 µg	464,00	394,40
CS-TA01-B	Tau (bovine brain)	3 x 50 µg	1 028,00	873,80
CS-TL440M-A	Tubulin (AMCA dye labeled; porcine, micro-injctn)	5 x 20 µg	479,00	407,15
CS-TL440M-B	Tubulin (AMCA dye labeled; porcine, micro-injctn)	20 x 20 µg	1 215,00	1 032,75
CS-TL488M-A	Tubulin (HiLyte 488TM dye labeled; porcine, micro-injctn)	5 x 20 µg	479,00	407,15
CS-TL488M-B	Tubulin (HiLyte 488TM dye labeled; porcine, micro-injctn)	20 x 20 µg	1 215,00	1 032,75
CS-TL590M-A	Tubulin (Rhodamine labeled; porcine, micro-injctn)	5 x 20 µg	479,00	407,15
CS-TL590M-B	Tubulin (Rhodamine labeled; porcine, micro-injctn)	20 x 20 µg	1 215,00	1 032,75
CS-TL620M-A	Tubulin (X-rhodamine labeled; Bovine Brain micr-injctn)	5 x 20 µg	479,00	407,15
CS-TL620M-B	Tubulin (X-rhodamine labeled; Bovine Brain micr-injctn)	20 x 20 µg	1 215,00	1 032,75
CS-TL670M-A	Tubulin (HiLyte 647TM dye labeled; porcine, micro-injctn)	5 x 20 µg	479,00	407,15
CS-TL670M-B	Tubulin (HiLyte 647TM dye labeled; porcine, micro-injctn)	20 x 20 µg	1 214,00	1 031,90

### Terms and Conditions:

Can not be combined with other offers.

Applicable only to the list of eligible products.

Offer expires: October 31st, 2024

### Contact us

#### Technical Support:

@ [techserv@euromedex.com](mailto:techserv@euromedex.com)

☎ +33 (0)3 67 07 71 54



#### EUROMEDEX

24 rue des Tuileries  
67460 SOUFFELWEYERSHEIM



[research@euromedex.com](mailto:research@euromedex.com)



+33 (0)3 88 18 07 22



[WWW.EUROMEDEX.COM](http://WWW.EUROMEDEX.COM)

