

PROMOTIONAL OFFER

VALID UNTIL

May 15th, 2021

TRI REAGENT®

TRI Reagent® is a **patented reagent for the isolation of total RNA or for the simultaneous isolation of RNA, DNA and proteins.**

The reagent is an improved version of the popular single-step method for total RNA isolation

-It is a monophasic solution containing phenol and guanidine thiocyanate.

- TRI Reagent® provides a reliable, cost effective and efficient method of RNA isolation.

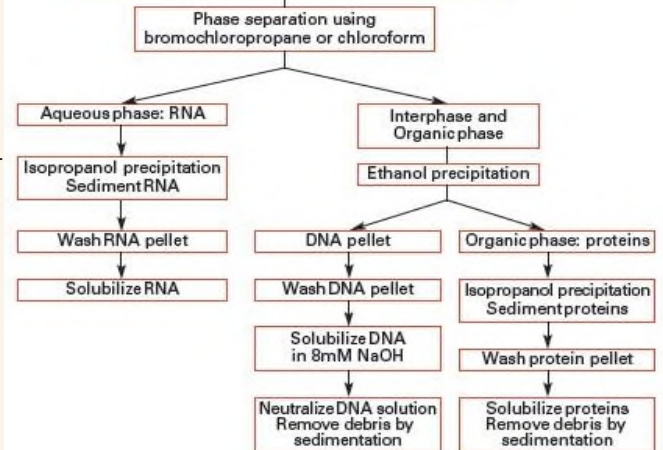
- TRI Reagent® allows for a comprehensive analysis of gene expression in a variety of samples of human, animal, plant, yeast, bacterial and viral origin.

- RNA isolation is complete in less than one hour, and DNA and protein isolations in less than three hours.

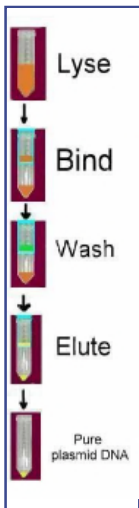
(Three versions of TRI Reagent® are available, each designed for optimal isolation efficiency from certain types of samples)

TR118-100 100ml 106,25 € HT

Homogenize sample in TRI®Reagent



EZ-10 SPIN COLUMN PLASMID DNA MINIPREPS KIT



This kit provides a simple and efficient method for mini plasmid DNA purification. The plasmid DNA is selectively adsorbed in silica gel-based EZ-10 column and other impurities such as proteins, salts, nucleotides, oligos (<40-mer) are washed away. In order to maximize the recovery yield of plasmid DNA, a color indicator-VisualLyse is added to the buffer which prevents insufficient or over-lysis during lysis and neutralization step. The plasmid DNA is then eluted off the column and can be used for any downstream application.

This kit can be used for purification of **plasmid DNA from 40bp-40kb**

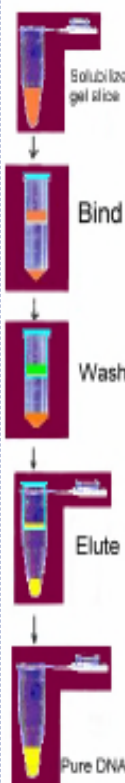
- ✓ **Simple, Fast and Efficient**
- ✓ Isolated DNA can be used for **downstream applications: Sequencing, PCR, transformation, restriction digestions**
- ✓ **High Yield and Reproducible**
- ✓ **High Capacity** - Up to 10µg of DNA per column

✓ Components of the kits :

RNase A(10mg/ml) - Solution I - Solution II - Solution III - VisualLyse - Wash Solution - Elution Buffer - EZ-10 Column

BI-BS413	50 T	34,40 € HT
BI-BS414	100 T	56,00 € HT
BI-BS614	250 T	126,40 € HT

EZ-10 SPIN COLUMN DNA GEL EXTRACTION KIT



The EZ-10 spin column purification kit utilizes a silica-gel based membrane which selectively adsorbs up to 10µg of DNA fragments in the presence of specialized binding buffers. Nucleotides, oligos (<40-mer), enzymes, mineral oil and other impurities do not bind to the membrane and are washed away.

DNA fragments are then eluted off the column and can be used for downstream protocols without further processing.

Applications & Features:

- ✓ Recovery of **40bp-40kb DNA fragments from agarose gels**
- ✓ **Quick and economical**
- ✓ **High Yield and Reproducible**
- ✓ Efficient removal of contaminants. Purified DNA can be used in any downstream application such as sequencing, labeling, restriction enzymatic digestion, ligation or transformation.

Components of the kit

Binding Buffer II - Wash Solution - Elution Buffer - EZ-10 Column

BI-BS353	50 T	34,40 € HT
BI-BS354	100 T	56,00 € HT
BI-BS654	250 T	126,40 € HT

SUMMARY

NUCLEIC ACID EXTRACTION AND PURIFICATION
p.1-4

PLASMID DNA MINIPREPS KIT
p.1

CHEMICALS
p.2-3

REVERSE TRANSCRIPTASE
COMPETENT CELLS
DNA LADDERS
PROTEIN LADDERS

p.4
p.5
p.6
p.6

Acryl/Bis Solution

	Ratio	19/1		29/1		37.5/1	
		500 ml	1L	500 ml	1L	500 ml	1L
40% Solution	Purity : 99.4%	EU0061-B 26,25 €	EU0061-C 42,75 €	EU0063-B 26,25 €	EU0063-C 42,75 €	EU0062-B 26,25 €	EU0062-C 42,75 €
	Purity : 99.9%	EU0076-B 32,25 €	EU0076-C 55,50 €	EU0077-B 32,25 €	EU0077-C 55,50 €	EU0078-B 32,25 €	EU0078-C 55,50 €
30% Solution	Purity : 99.4%	EU0072-B 29,75 €	EU0072-C 45,60 €	EU0073-B 26,25 €	EU0073-C 42,75 €	EU0074-B 26,25 €	EU0074-C 42,75 €
	Purity : 99.9%	EU0086-B 32,25 €	EU0086-C 55,50 €	EU0087-B 32,25 €	EU0087-C 55,50 €	EU0088-B 32,25 €	EU0088-C 55,50 €

Agar

Bacteriological Grade

1330-C	250 g	29,75 € HT
1330-D	500 g	51,00 € HT
1330	1 kg	86,70 € HT

Agarose DNA Grade

Gelling Temperature : 34-37°C

Specially recommended for separation of megabase DNA (up to 40 Kb) by Pulsed Field Gel Electrophoresis (PFGE) and DNA ≥ 1Kb by conventional electrophoresis. DNase/RNase activity: none detected.

D5-C	100 g	46,90 € HT
D5-E	500 g	204,00 € HT
D5	1 kg	409,50 € HT

AGAROSE for routine Analysis

DNA fragments from 23 kb to 100 bp may be separated through conventional electrophoresis

No detectable DNase or RNase activity

✓ EEO < 0.120	✓ Gel strength 1%	> 1200 g/cm ²
LE-8200-A	100 g	33,00 € HT
LE-8200-B	500 g	144,50 € HT
LE-8200	1 kg	255,00 € HT

Albumine Bovine Fr V, pH 7

04-100-812-C	100 g	63,75 € HT
04-100-812-E	500 g	272,00 € HT
04-100-812	1 kg	471,75 € HT

Ampicillin, Sodium Salt

EU0400-B	5 g	10,50 € HT
EU0400-C	10 g	17,50 € HT
EU0400-D	25 g	39,90 € HT

Aprotinin

Can be added to cell culture to prevent decomposition of protein hormones such as insulin

A162-A	5 mg	15,30 € HT
A162-B	10 mg	25,50 € HT
A162-E	25 mg	56,95 € HT
A162-C	50 mg	104,40 € HT

CHAPS

1083-B	5 g	29,40 € HT
1083-C	10 g	55,30 € HT
1083	25 g	133,50 € HT

DMSO

✓ ACS

UD8050-05-A	100 ml	11,20 € HT
UD8050-05-C	500 ml	30,60 € HT

✓ Molecular Biology Grade

UD8050-A	100 ml	27,20 € HT
UD8050-B	250 ml	60,80 € HT

DNase I

Deoxyribonuclease I from bovine pancreas (3000U/mg)

1307	20 000U	20,80 € HT
1307-B	100 000U	88,00 € HT

DTT

Molecular Biology Grade. Purity >99%

EU0006-B	5 g	15,40 € HT
EU0006-D	25 g	63,00 € HT
EU0006	100 g	202,50 € HT

EDTA

Ethylene diamine tetracetic acid disodium salt, 2H₂O

Purity >99%

EU0007	1 Kg	23,20 € HT
EU0007-B	500 g	13,65 € HT

Gentamycin Sulfate

EU0410-A	1 g	5,60 € HT
EU0410-B	5 g	11,90 € HT
EU0410-C	25 g	53,10 € HT

Glucose Anhydrous

Alpha-D-(+)-Glucose UG3050	1 kg	20,00 € HT
-------------------------------	------	------------

Glycerol

✓ High Purity > 99%

EU3550	1 l	17,00 € HT
--------	-----	------------

✓ High Purity > 99%, Molecular Biology Grade

EU3555	1 l	33,30 € HT
--------	-----	------------

Glycine Ultra pur

Purity >99%

26-128-6405-C	1 kg	17,25 € HT
---------------	------	------------

IPTG

Dioxane Free

EU0008-A	1 g	7,80 € HT
EU0008-B	5 g	31,80 € HT
EU0008-C	25 g	117,00 € HT

LB Broth

✓ LB Lennox

Tryptone 10g/L; Yeast Extract 5g/L; NaCl 5g/L
AE-0102 500 g 46,80 € HT

✓ LB Miller

Tryptone 10g/L; Yeast Extract 5g/L; NaCl 10g/L
AE-0103 500 g 46,80 € HT

✓ LB Lennox Agar

Tryptone 10g ; yeast extract 5.0g ; NaCl 5g ; Agar 15g
EU0031 500 g 49,30 € HT

Luciferin

D-Luciferin, potassium salt

12505-AAT	25 mg	77,35 € HT
12506-AAT	100 mg	96,05 € HT
12507-AAT	1 g	247,35 € HT

PBS

✓ Solution 10X :

Contains : NaCl, KH₂PO₄ , Na₂HPO₄

Prepared with water 18 megaohm, filtered 0.2µm, pH : 7,4

ET330	1L	9,80 € HT
ET330-A	5L	28,00 € HT

✓ Tablets :

1 tablet or 1 pouch dissolved in its corresponding solution volume of deionized water yields: 0.14 M sodium chloride; 0.0027 M potassium chloride; 0.01 M phosphate buffer pH 7.4 at 25° C.

EU1-2051-100 (100ml/Tab)	100Tabs	35,70 € HT
EU1-2052-100 (200ml/tab)	100 tabs	59,50 € HT

SDS

✓ Solution 20% :

prepared with SDS Ultrapur (99.9%), 18 megaohm water filtered 0.2µm

EU0660	1 Liter	44,80 € HT
EU0660-B	500 ml	25,90 € HT

✓ Tablets

Sodium dodecyl sulphate (SDS) tablets, 0.5 g

EU1-2026-50	50 Tabs	29,75 € HT
-------------	---------	------------

Sodium Chloride

Purity min.: 99.5%

1112-A	1kg	9,10 € HT
--------	-----	-----------

SSC 20X

Prepared with ultra pur reagents, 0.2µm filtered

EU0300-A	1 L	9,00 € HT
EU0300-B	2,5 L	14,70 € HT
EU0300-C	5 L	23,80 € HT

Sucrose

D(+)-Saccharose

Purity min.: 99,5%

200-301	5 kg	42,40 € HT
200-301-B	1 kg	10,50 € HT
200-301-A	500g	7,50 € HT

TAE

✓ TAE 10X

contains : Tris 0.4M, Acetate 0,2M and EDTA 10mM.

Filtered 0.2µm and prepared with 18,2 megaohm water

EU0202-A	1 L	8,25 € HT
EU0202	5 L	21,70 € HT

✓ TAE 25X

contains : Tris 1M, Acetate 0,5M and EDTA 25mM.

Filtered 0.2µm and prepared with 18,2 megaohm water

EU0200-A	1 L	12,75 € HT
EU0200	5 L	54,90 € HT

✓ TAE 50X

contains : Tris 2M, Acetate 1M and EDTA 50mM.

Filtered 0.2µm and prepared with 18,2 megaohm water

EU0201-A	1 L	19,50 € HT
EU0201	5 L	82,45 € HT

TBE 10X

composition : Tris :0.89M, Boric acid: 0.89M; EDTA20mM

ET020-A	1 L	10,50 € HT
ET020-B	2.5 L	21,60 € HT
ET020-C	5 L	38,25 € HT

TBS 10X

contains: Tris 0.25M, NaCl 1.37M and KCl 26.8mM

ET220	1 L	9,10 € HT
ET220-B	5 L	28,00 € HT

TG 10x

Contains 0,25M Tris and 1,92M Glycine

EU0550-B	1 L	8,40 € HT
EU0550	5 L	25,20 € HT

TG-SDS 10x

Contains 0,25M Tris; 1,92M Glycine and 1% SDS

EU0510-A	1 L	10,40 € HT
EU0510	5 L	29,25 € HT

TRIS HCl

Purity > 99%

Appearance: White, crystalline powder

EU0011-C	500 g	52,70 € HT
EU0011-A	100 g	12,75 € HT

Urea

≥99,6 %, cryst.

EU0014-A	500 g	9,60 € HT
EU0014-B	1 kg	16,15 € HT

X-Gal

Molecular Biology

EU0012-C	500 mg	25,90 € HT
EU0012-D	1 g	37,10 € HT
EU0012	5 g	161,00 € HT

MASTERPURE™ COMPLETE DNA AND RNA PURIFICATION KIT

Quickly purify high yields of high-molecular-weight genomic DNA, total cellular RNA or Total Nucleic Acid (TNA) with one kit

- ✓ **Fast:** Purify Total Nucleic Acid (TNA), DNA or RNA in 30 – 60 minutes
- ✓ **Safe:** Does not use hazardous phenol, chloroform or guanidine
- ✓ **High Purity:** A260/A280 ratios consistently between 1.8 and 2.0
- ✓ **High Yields:** Improves yields by avoiding the use of columns which often reduce nucleic acid yields
- ✓ **Versatile:** Purify TNA, genomic DNA, total RNA, FFPE RNA, or both genomic DNA and total RNA from a sample

Total RNA Recovery: Purify both large and small (e.g., miRNA) RNA for RNA-Seq or qRT-PCR

Proven: Hundreds of citations for purification of DNA and RNA from dozens of sample types for use in many applications

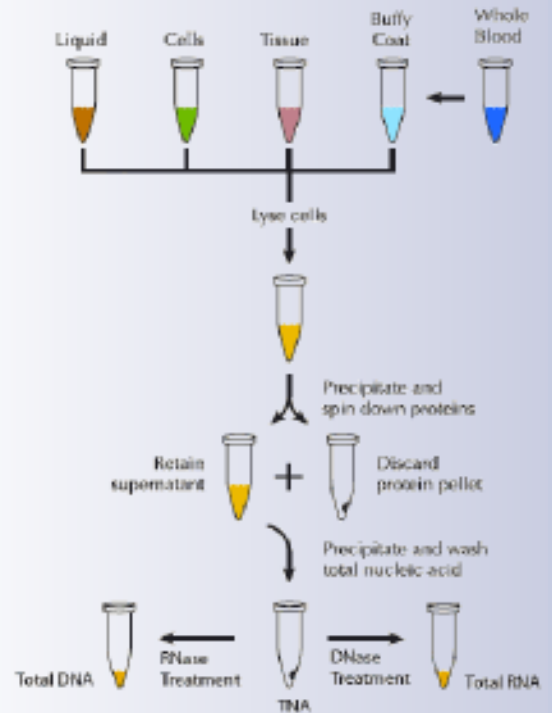
Applications

Purification of genomic DNA or total RNA for many applications, including:

- ✓ Library preparation for next generation sequencing (NGS) of genomic DNA and RNA
- ✓ DNA methylation studies using Illumina® Infinium® HumanMethylation BeadChips
- ✓ Genomic DNA and cDNA cloning
- ✓ qPCR and qRT-PCR
- ✓ Microarray analyses (CGH, gene expression profiling, etc)

LU-MC85200 200 DNA or 100 RNA purifications 442,00 €HT*

LU-MC89010 10 DNA or 5 RNA purifications 90,10 €HT*



QUICKEXTRACT™ DNA EXTRACTION SOLUTION

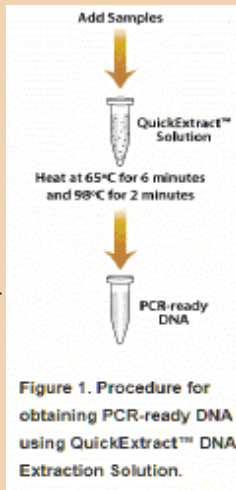
Simple, rapid extraction of PCR-ready DNA for screening and genotyping type applications

- ✓ **Fast:** 8 minute extraction protocol for most sample types
- ✓ **Simple:** No centrifugation steps or spin columns used to help increase yields
- ✓ **Automation-friendly:** Simple protocol integrated easily into automated workflows
- ✓ **Safe:** Uses only non-toxic reagents

Recommended for rapid, easy sample prep for T7E1 CRISPR mutation detection assay

The QuickExtract™ DNA Extraction Solution can be used to rapidly and efficiently extract PCR-ready genomic **DNA from almost any sample type** using a simple, **one-tube protocol** that takes only 3-8 minutes (Fig. 1), depending on the sample.

QuickExtract Solution has been used to extract DNA from samples such as hair follicles, quill-end cells of feathers, tissue-culture cells, buccal cells, zebrafish organs and scales, and mouse tail snips. The extracted DNA is suitable for PCR analyses, such as genomic, transgenic, or viral DNA screening in animals, or for genetic or environmental research and screening in humans and other organisms.



LU-QE09050 50ml 340,85 €HT*
LU-QE0905T 5ml 67,15 €HT*

EPISCRIP™ RNASE H- RT

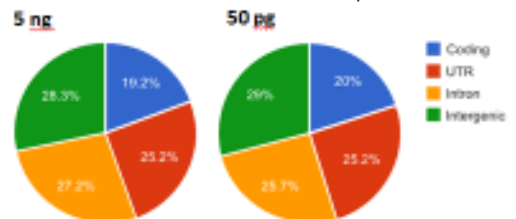
An optimized reverse transcriptase system for the production of full-length cDNA

Applications

- ✓ First-strand cDNA synthesis for subsequent PCR or real-time PCR

Benefits

- ✓ Recombinant MMLV reverse transcriptase with greatly reduced RNase H activity
- ✓ Active at temperatures up to 55°C workflows
- ✓ Highly efficient at producing full-length cDNA from as little as 50 pg of total RNA
- ✓ Best value in an RNase H- Reverse Transcriptase



Use of EpiScript® Reverse Transcriptase for first strand cDNA results in detection of similar transcript categories independent of input amount.

LU-ERT12910K 10 000 units 104,55 €HT*
LU-ERT12925K 25 000 units 176,80 €HT*

RAPIDXFIRE™ THERMOSTABLE REVERSE TRANSCRIPTASE

A truly thermostable reverse transcriptase for fast synthesis of short cDNA (< 1 Kb)

RapiDxFire™ Thermostable Reverse Transcriptase is a significant advancement over popular MMLV- and AMV reverse transcriptases. Originally identified in hot springs, this robust bacteriophage enzyme exhibits increasingly high activity at elevated temperatures (~60% activity remains after 10 min at 90°C) and maintains its core activity after >3 months storage at 20-25°C. This enzyme lacks RNase H and 3'→5' exonuclease activity and efficiently synthesizes short cDNA fragments (≤ 1 Kb). Like other reverse transcriptases, RapiDxFire RT possesses DNA polymerase activity but lacks 5'→3' exonuclease activity. Supplied in a glycerol-free, Triton™ X-100-free storage buffer, the enzyme formulation can be further optimized for downstream lyophilization

- ✓ **Extremely active at high temperatures (55 to 80°C):** Improves specificity of cDNA Synthesis from diverse RNA templates
- ✓ **Sensitive:** Detects ≤100 copies of RNA in two-step RT-qPCR assays
- ✓ **Short reaction time (5 minutes or less):** Streamlined RT-qPCR workflow and faster time to results
- ✓ **Stable at room temperature (> 3 months):** Simplifies setup on automation decks (no cold storage required) and enables use in environments with limited cold-storage

LU-30250-1 50 rxns 408,80 €HT*
LU-30250-2 250 rxns 1736,00 €HT*

E. CLONI® COMPETENT CELLS

High Transformation Efficiency for General Cloning Needs

- Direct replacements for standard cloning strains (e.g., DH5a™, DH10B™, TOP10, XL1-Blue, etc.)
- Optimized genetics for high yields: phage T1 resistant, endonuclease and recombination minus, blue/white screening-capable.
- Available in a range of high transformation efficiencies (1×10^6 to 4×10^{10} cfu/ug).

E. cloni® 10G and 10GF' Electrocompetent Cells

Choice of strain:

✓ *E. cloni 10G Competent Cells*: Library construction, cloning, subcloning, and plasmid isolation with or without blue/white screening.

✓ *E. cloni 10GF' Competent Cells*: Contain the F' plasmid for infection with M13 to produce ssDNA.

Choice of efficiency:

✓ *E. cloni 10G SUPREME Electrocompetent Cells* > 4×10^{10} cfu/ug pUC DNA

SUPREME Cells have the highest transformation efficiency available from any supplier. Choose SUPREME Cells for the most demanding cloning situations, such as construction of large, high complexity libraries or cloning difficult targets, which require the greatest number of transformants possible.

✓ *E. cloni 10G & 10GF' ELITE Electrocompetent Cells* > 2×10^{10} cfu/ug pUC DNA

ELITE Cells have twice the transformation efficiency compared to "ultra high efficiency" cells from other suppliers. ELITE Cells provide large numbers of transformants from hard-to-clone fragments or limited DNA.

✓ *E. cloni 10G CLASSIC Electrocompetent Cells* > 5×10^9 cfu/ug pUC DNA
CLASSIC Cells are high efficiency cells. These cells are the most economical choice for standard cloning and library construction. 10G CLASSIC Cells are available in larger package sizes for convenient use in higher volume cloning applications.

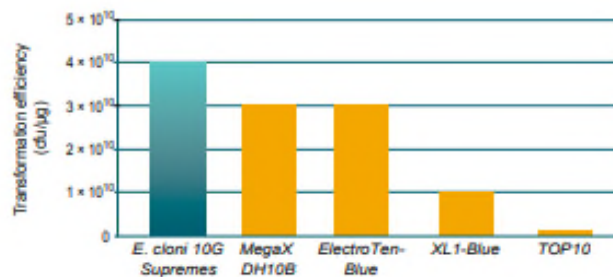
	Cat. N°	Size	Price €HT
E. cloni 10GF' ELITE > 2×10^{10} cfu/ug	LU-60061-1	12 rxns (DUOs)	168,00*
	LU-60061-2	24 rxns (DUOs)	290,40*
E. cloni 10G CLASSIC > 5×10^9 cfu/ug	LU-60117-1	24 rxns (SixPacks)	196,80*
	LU-60117-2	48 rxns (SixPacks)	351,20*
E. cloni 10G ELITE > 2×10^{10} cfu/ug	LU-60051-1	12 rxns (SOLOs)	190,40*
	LU-60051-2	24 rxns (SOLOs)	329,60*
	LU-60052-1	12 rxns (DUOs)	165,60*
	LU-60052-2	24 rxns (DUOs)	287,20*
	LU-60052-3	24 rxns (SixPacks)	220,00*
	LU-60052-4	48 rxns (SixPacks)	366,40*
E. cloni 10G SUPREME > 4×10^{10} cfu/ug	LU-60081-1	12 rxns (SOLOs)	296,00*
	LU-60081-2	24 rxns (SOLOs)	524,00*
	LU-60080-1	12 rxns (DUOs)	260,00*
	LU-60080-2	24 rxns (DUOs)	477,60*

E. cloni® 5-alpha Chemically Competent Cells

> 1×10^8 cfu/ug DNA

Useful for routine cloning, subcloning, and plasmid isolation with or without blue/white screening.

	Cat. N°	Size	Price €HT
E. cloni 5-alpha Chemically Competent Cells > 1×10^8 cfu/ug DNA	LU-60602-1	12 rxns (DUOs)	109,60*
	LU-60602-2	24 rxns (DUOs)	190,40*



Superior transformation efficiency
Electrocompetent cells

E. cloni® 10G Chemically Competent Cells

Choice of efficiency:

✓ *E. cloni 10G Chemically Competent Cells* (> 1×10^9 cfu/ug pUC DNA) (> 1×10^8 in 96-well plates).

Highly efficient competent cells for routine cloning applications. Available in one transformation per tube (SOLOs) or two transformations per tube (DUOs). Also available in 96-well plates (which can be divided into 24-well segments) for higher throughput.

✓ *E. cloni 10G Chemically Competent Cells, Subcloning Grade* (> 1×10^6 cfu/ug pUC DNA).

The best value available anywhere for simple cloning and plasmid propagation.

	Cat. N°	Size	Price €HT
E. cloni 10G > 1×10^9 cfu/ug	LU-60107-1	12 rxns (DUOs)	123,20*
	LU-60107-2	24 rxns (DUOs)	216,80*
	LU-60107-3	48 rxns (DUOs)	358,40*
	LU-60107-4	96 rxns (DUOs)	638,40*
	LU-60106-1	12 rxns (SOLOs)	142,40*
	LU-60106-2	24 rxns (SOLOs)	248,80*
	LU-60106-3	48 rxns (SOLOs)	414,40*
E. cloni 10G (Subcloning Grade) > 1×10^6 cfu/ug	LU-60108-1	48 rxns	71,20*
	LU-60108-2	96 rxns	140,80*
E. cloni 10G in 96-well plate > 1×10^8 cfu/ug	LU-60096-1	1 plate (SOLOs)	452,80*
	LU-60096-4	4 plates (SOLOs)	1596,80*

TransforMax™ EC100™ Electrocompetent and Chemically Competent E. coli

General cloning strain

✓ Clone large inserts and transform large plasmids - up to at least 145 kb plasmid DNA.

✓ Achieve high efficiencies with convenient chemically competent format: > 5×10^8 cfu/ug pUC19 DNA.

✓ Ideal for cloning, subcloning and plasmid preparation due to endA and recA mutations.

TransforMax EC100 Electrocompetent E. coli: Transformation efficiency of > 1×10^{10} cfu/ug of pUC19.

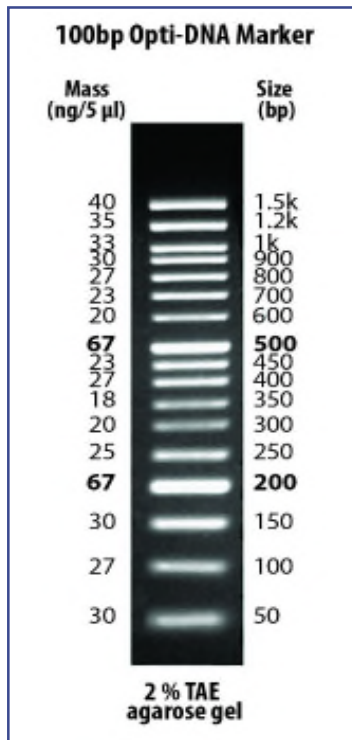
TransforMax EC100 Chemically Competent E. coli: Transformation efficiency of > 5×10^8 cfu/ug of pUC19.

	Cat. N°	Size	Price €HT
TransforMax™ EC100™ Chemically Competent E. coli	LU-CC02810	10 x 50ul (10 rxns)	129,20*
TransforMax™ EC100™ Electrocompetent E. coli	LU-EC10010	10 x 100ul (20 rxns)	283,05*

DNA LADDERS

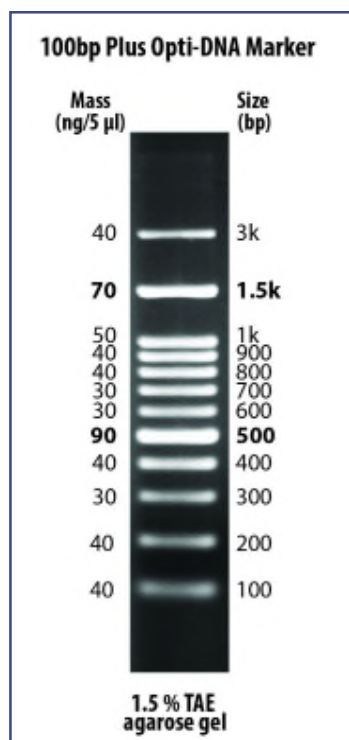
100bp Opti-DNA Marker

AM-G016 500 µl/100 loads
35,20€ HT



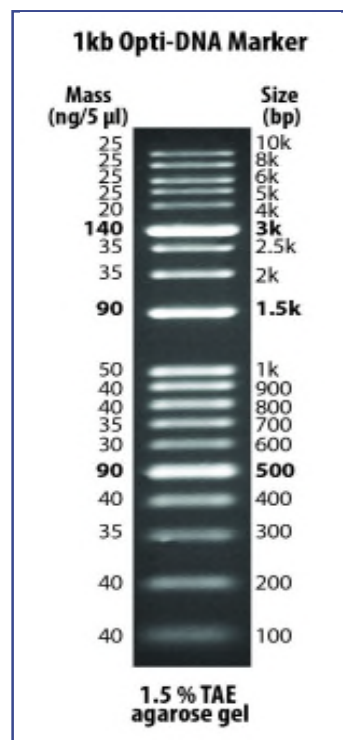
100bp Plus Opti-DNA Marker

AM-G193 500 µl/100 loads
35,20€ HT



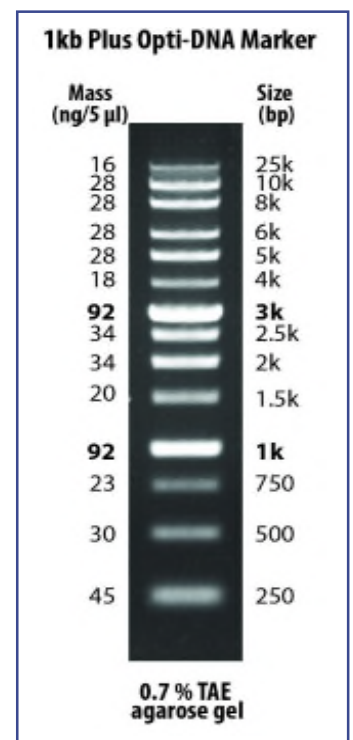
1kb Opti-DNA Marker

AM-G106 500 µl/100 loads
35,20€ HT



1kb Plus Opti-DNA Marker

AM-G248 500 µl/100 loads
35,20€ HT



PROTEIN LADDERS

(1) **Opti-Protein XL Marker/Ladder** consists of 12 proteins that resolve into sharp, tight bands in the range of 10-245 kDa. This unique protein ladder allows you to monitor protein separation during electrophoresis, estimate molecular weight of the protein of interest, and evaluate western blot transfer efficiency. Proteins are covalently coupled with a blue chromophore except for two reference bands (one green and one red band at 25kDa and 75 kDa respectively) when separated on SDS-PAGE (Tris-glycine buffer).

(2) With enhanced performance for high molecular weight proteins, **Opti-Protein Ultra Marker** consists of 10 pre-stained proteins that resolve into sharp, tight bands covering a wide range of molecular weights from 6.5 to 270 kDa. This protein ladder allows you to monitor protein separation during electrophoresis, estimate molecular weight of the protein of interest, and evaluate western blot transfer efficiency. Proteins are covalently coupled with a blue chromophore except for three reference bands (two orange bands at 30 kDa and 270 kDa and one green band at 52 kDa) when separated on gel.

Opti-Protein Marker

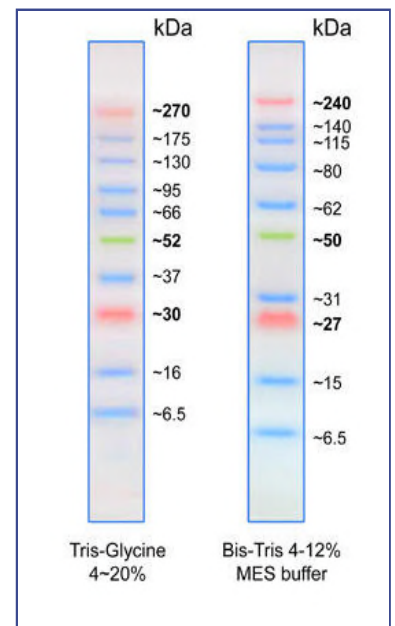
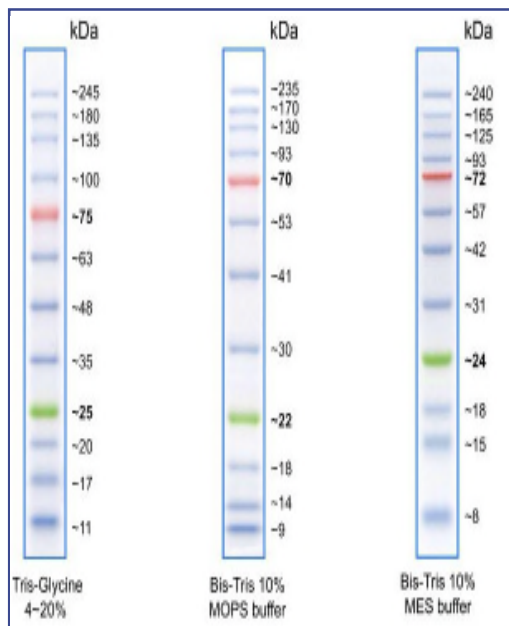
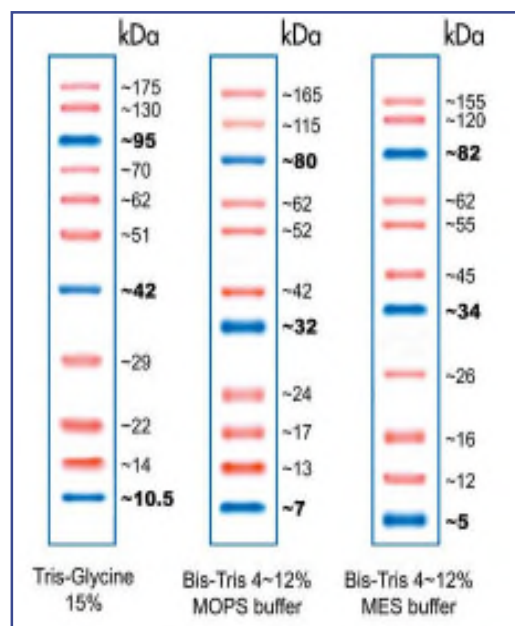
AM-G252 500 µl/100 loads 83,20 € HT

Opti-Protein XL Marker (1)

AM-G266 500 µl/100 loads 96,00 € HT

Protein Marker Ultra Marker (2)

AM-G623 500 µl/100 loads
60,00 € HT



EUROMEDEX

*Prices are valid until May 15th, 2021

6

24, rue des Tuileries BP 684 - 67460 SOUFFELWEYERSHEIM
Tél : 03 88 18 07 22 Fax : 03 88 18 07 25
e.mail : research@euromedex.com - Internet : www.euromedex.com